

**ACJ**

**CORPORATE JETS**

**ACJ 330** *neo*



**ACJ330** *neo*

Reliable technology

# ACJ330neo


The most successful  
widebody aircraft

- > New high-bypass engines
- > New High-Span wing
- > Applying A350 XWB technologies



More than

 1700 orders\*

 120 clients

Operating to more  
than 400 airports\*



**ACJ 330** *neo*

Proven performance  
to the world

# ACJ 330neo

Enables you to fly nonstop to the world

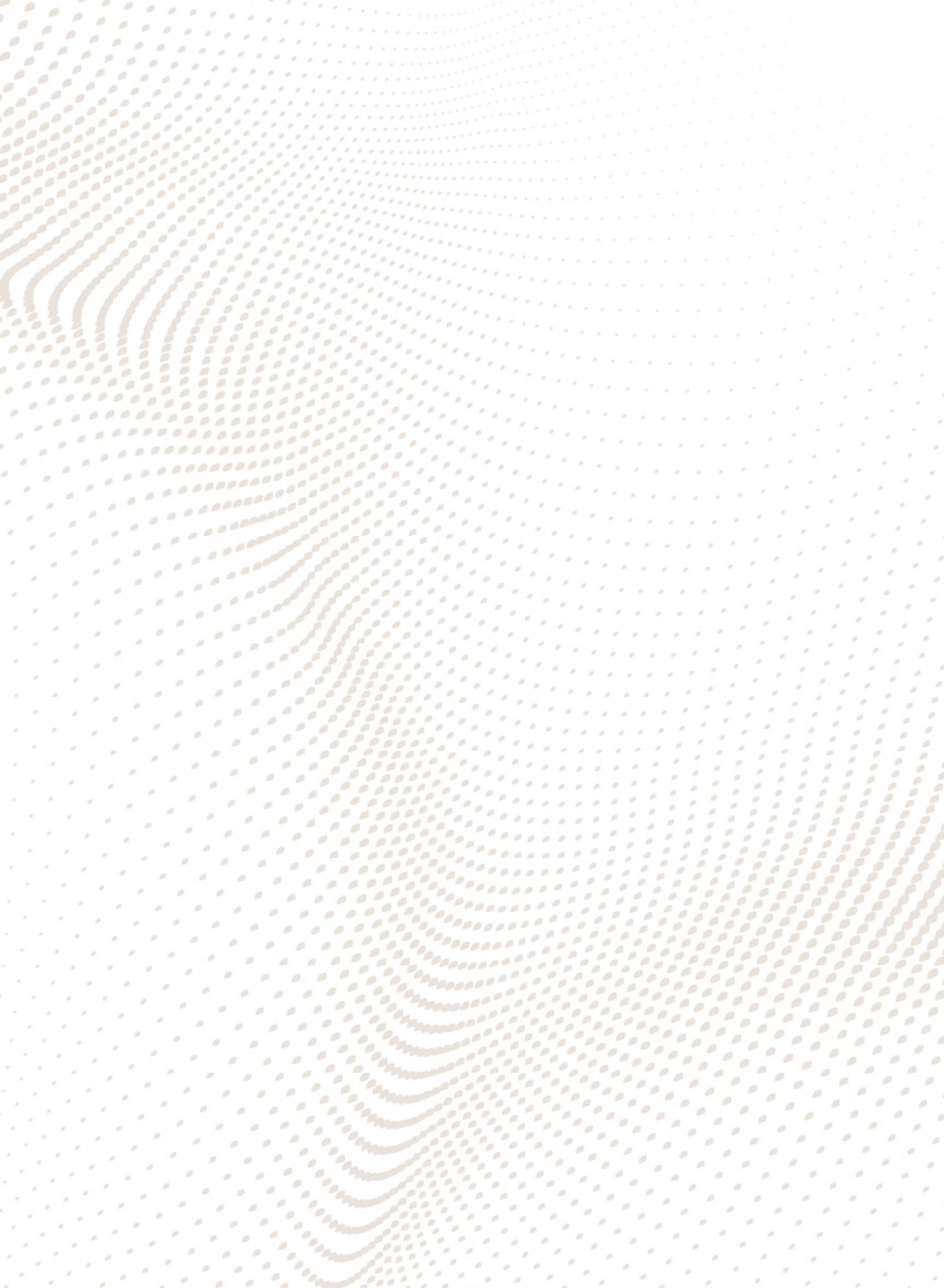


from London

25 passengers  
85% annual  
reliability headwinds  
NBAA Flight Profile  
200nm Diversion  
distance  
Subject to Weight  
and balance analysis

## ACJ 330neo

Over 21 flying hours - 10,400 nm / 19,300 km



**ACJ330** *neo*

New-generation technology  
and efficiency

# New systems applying A350 XWB technology

A step change in engine efficiency  
**11% Lower Fuel Burn vs CEO**

112" fan. 15% larger, twice the bypass ratio of Trent 772B.



Maturity from in-service experience

### Latest cockpit technology

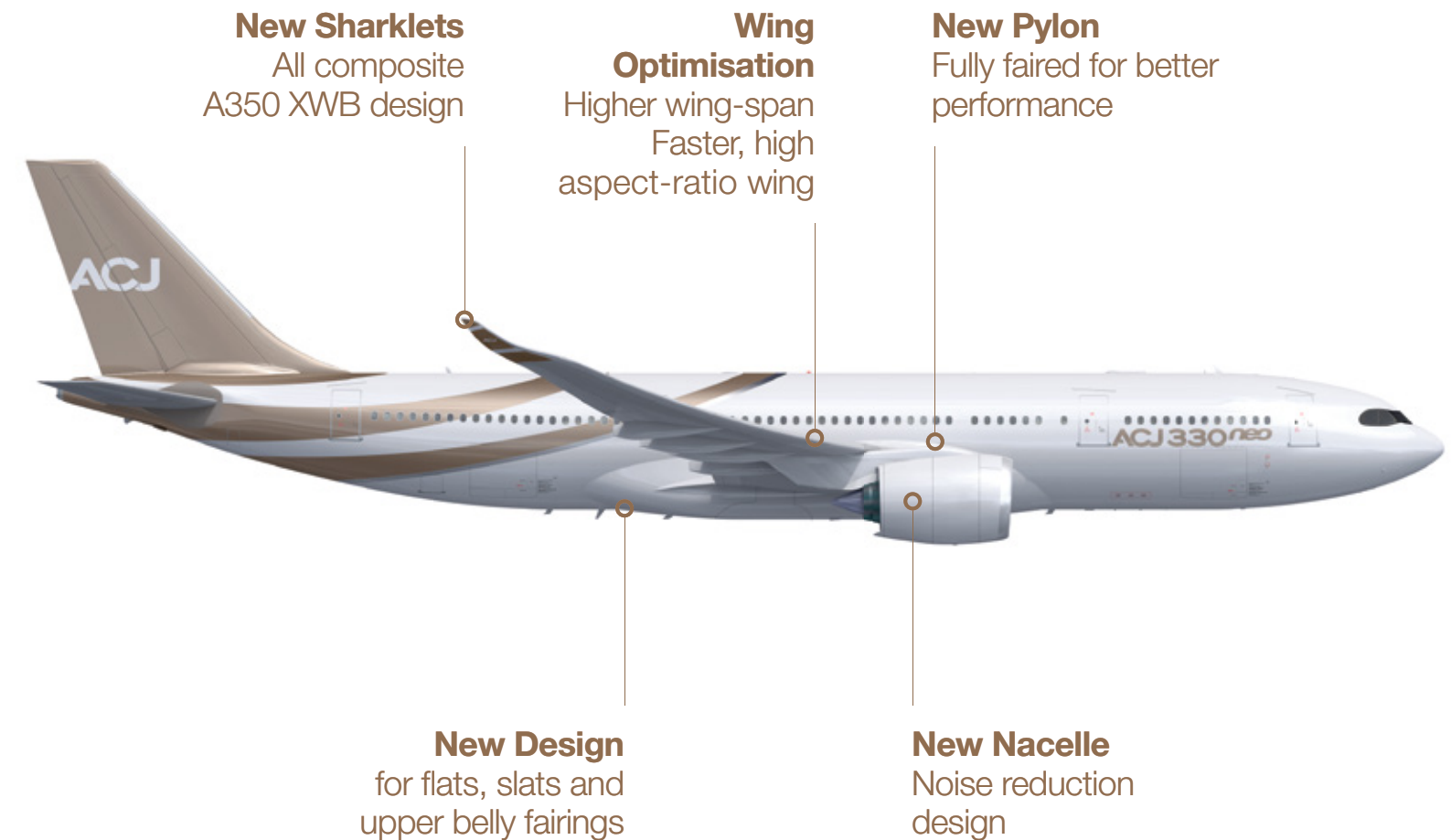
- > Dual head-up display (HUD)
- > Airport navigation (OANS)
- > High precision approach (GLS)
- > High precision navigation (RNP)
- > Runway overrun prevention (ROPS)



### Cockpit Safety

- > FANS A+
- > ADS-B Out
- > Cockpit phone

# New generation aerodynamics



**99.9%\***  
Operational Reliability  
Basic ETOPS 180min.

- > Longer maintenance intervals
- > Reduced maintenance costs
- > 95% spares commonality with CEO

\*99.5% reliability for Airlines based on A330 in service aircraft



**ACJ 330** *neo*  
Unmatched comfort



# ACJ330neo

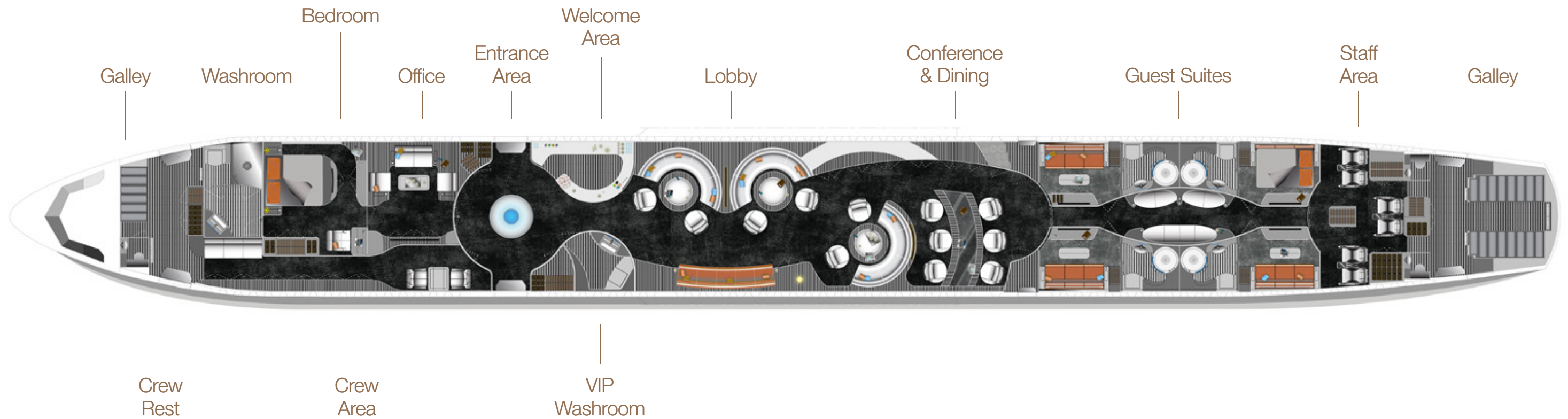
Enjoy extra personal space



ACJ330-800neo  
216m<sup>2</sup>/2,325ft<sup>2</sup> cabin space



ACJ330-900neo  
243m<sup>2</sup>/2,616ft<sup>2</sup> cabin space



Four approved cabin outfitters

ACJ330-800  
Superior comfort



# Spacious cabin

# Best comfort vs direct competition

- › 20% more fresh air: cabin air renewed every two minutes
- › Improved cabin altitude (average cabin altitude of 6,800ft)
- › 3dB quieter cabin
- › Up to 6 controlled temperature zones





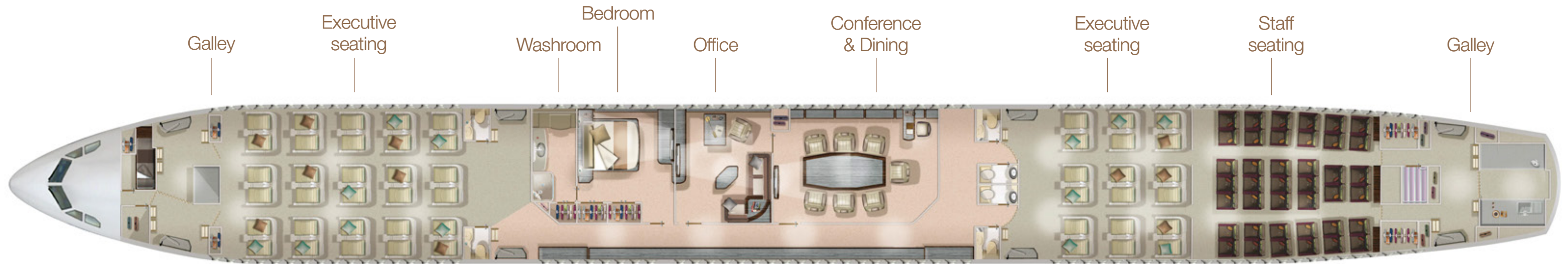




# ACJ330neo

Comfort & space

Make the most of your time



Four approved cabin outfitters

ACJ330-800  
Unmatched comfort



**comlux**

**JETAVIATION**  
A GENERAL DYNAMICS COMPANY

 **Lufthansa Technik**  
VIP & Special Mission Aircraft Services

# On-Board Internet services

## ACJ330neo enables

- › Productive work spaces
- › Ability to host Meetings on board
- › Ka-band technology for HD video streaming, mobile phone services, videoconferencing, live TV (IPTV)













**ACJ 330** *neo*

Excellence  
in customer care

# C4You

A single interface for customer support

[c4you@airbus.com](mailto:c4you@airbus.com)

› **Manages**

AOG & routine requests

› **Provides**

components and services

› **Simplifies**

the customer experience



**300+** field representatives  
supporting more than  
**500** customers and operators  
around the world

# Technical data

## ACJ330-800

### Exterior dimensions

Length	58.82 m	193 ft
Height	17.39 m	57 ft 1 in
Fuselage width	5.64 m	18 ft 6 in
Wingspan	64 m	210 ft

### Basic weights

Maximum take-off weight	Up to 251 t	553,400 lb
Maximum landing weight	186 t	410,060 lb
Maximum zero fuel weight	176 t	388,014 lb
Maximum fuel capacity	139,090 L	36,750 USG

### Interior dimensions

Cabin length	45 m	147 ft 9 in
Max cabin width	5.27 m	17 ft 3 in
Cabin floor area	216 m <sup>2</sup>	2,325 ft <sup>2</sup>

### Engines / Speed

Rolls-Royce Trent	2 x 72,000 lb
Typical Cruise Speed	M0.82
Max Flight Level	41,000 ft

## ACJ330-900

### Exterior dimensions

Length	63.66 m	208 ft 10 in
Height	16.79 m	55 ft 1 in
Fuselage width	5.64 m	18 ft 6 in
Wingspan	64 m	201 ft

### Basic weights

Maximum take-off weight	Up to 251 t	553,400 lb
Maximum landing weight	191 t	421,083 lb
Maximum zero fuel weight	181 t	399,037 lb
Maximum fuel capacity	139,090 L	36,750 USG

### Interior dimensions

Cabin length	50.35 m	165 ft 2 in
Max cabin width	5.27 m	17 ft 3 in
Cabin floor area	243 m <sup>2</sup>	2,616 ft <sup>2</sup>

### Engines / Speed

Rolls-Royce Trent	2 x 72,000 lb
Typical Cruise Speed	M0.82
Max Flight Level	41,000 ft



**Toulouse, France:**

Phone: +33 5 62 11 04 17  
+33 5 67 19 03 96  
Fax: +33 5 61 93 45 15  
Airbus Corporate Jets  
2 Rond-point Emile Dewoitine  
31 700 Blagnac, France  
E-mail: corporate.jet@airbus.com

**Beijing, P.R. China**

Phone: ++861080475288  
Airbus (China) Enterprise Management  
and Services Co.Ltd  
Tian Zhu Lu 8, Building 2,  
Beijing Airport Economic Core Zone,  
Shunyi District,  
Beijing, 101312, P.R. China

**Dubai, UAE**

Phone: +971 4 2996761  
Fax: +971 4 2996762  
Airbus Africa & Middle East  
Dubai Airport Free Zone  
West Wing 8W Building, 6<sup>th</sup> Floor  
PO BOX 54341, DUBAI  
United Arab Emirates

**Hong Kong, China**

Phone: +852 2340 2330  
Fax: +852 2350 3500  
Airbus Hong Kong Representation Office,  
Suite 503, One City gate,  
20 Tat Tung Road, Tung Chung, Lantau  
New territories  
Hong Kong SAR

**Moscow, Russia**

Phone: +7 499 929 79 17  
Fax: +7 499 929 79 71  
Airbus Moscow Office 40/2, Bolshaya  
Ordynka Str. 5<sup>th</sup> floor 119017 Moscow  
Russia

**Washington, USA**

Phone: +1 703 834 3457  
Airbus Americas 2550 Wasser Terrace  
Suite 9100 USA  
Herndon, VA 20171

Or visit our website  
[www.acj.airbus.com](http://www.acj.airbus.com)

**AIRBUS**

AIRBUS S.A.S. 31707 Blagnac Cedex, France  
© AIRBUS S.A.S. 2019 - All rights reserved. Airbus, its  
logo and the product names are registered trademarks.  
Concept Design by Airbus Multi Media Support 20190213.  
Photos by Airbus, S. Ramadier, P. Pigeyre. Renderings  
by Fixion.

Printed in France by Art & Caractère. July 2019.  
Reference: D17012335, issue 3.

Confidential and proprietary document. This document  
and all information contained herein is the sole property  
of AIRBUS S.A.S. No intellectual property rights are  
granted by the delivery of this document or the disclosure  
of its content. This document shall not be reproduced  
or disclosed to a third party without the express written  
consent of AIRBUS S.A.S.

This document and its content shall not be used  
for any purpose other than that for which it is supplied.  
The statements made herein do not constitute an offer.  
They are based on the mentioned assumptions  
and are expressed in good faith. Where the supporting  
grounds for these statements are not shown, AIRBUS  
S.A.S. will be pleased to explain the basis thereof.

This paper is produced in factories that are accredited  
EMAS and certified ISO 9001-14001, PEFC and FSC CoC.  
It is produced using pulp that has been whitened without  
either chlorine or acid. The paper is entirely recyclable  
and is produced from trees grown in sustainable forest  
resources.

The printing inks use organic pigments or minerals. There  
is no use of basic dyes or dangerous metals from the  
cadmium, lead, mercury or hexavalent chromium group.

The printer, Art & Caractère (France 81500),  
is engaged in a waste management and recycling  
programme for all resulting by-products.

